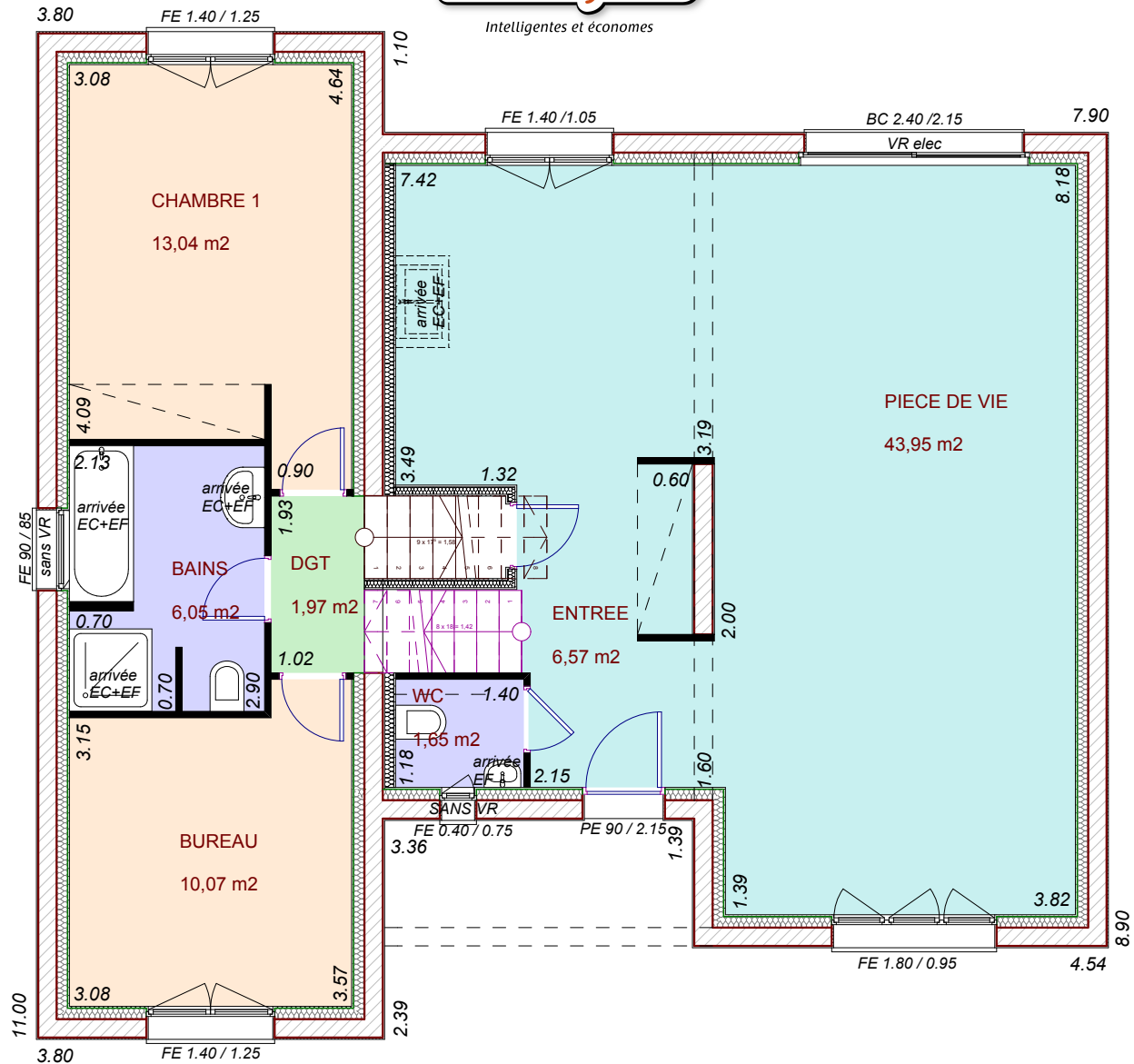


**ZARAH**

SOUS-SOL

**106.82 M<sup>2</sup>**

Surface Vitrée = 18.34 m<sup>2</sup> soit 17.17% de la surface habitable



**ZARAH**

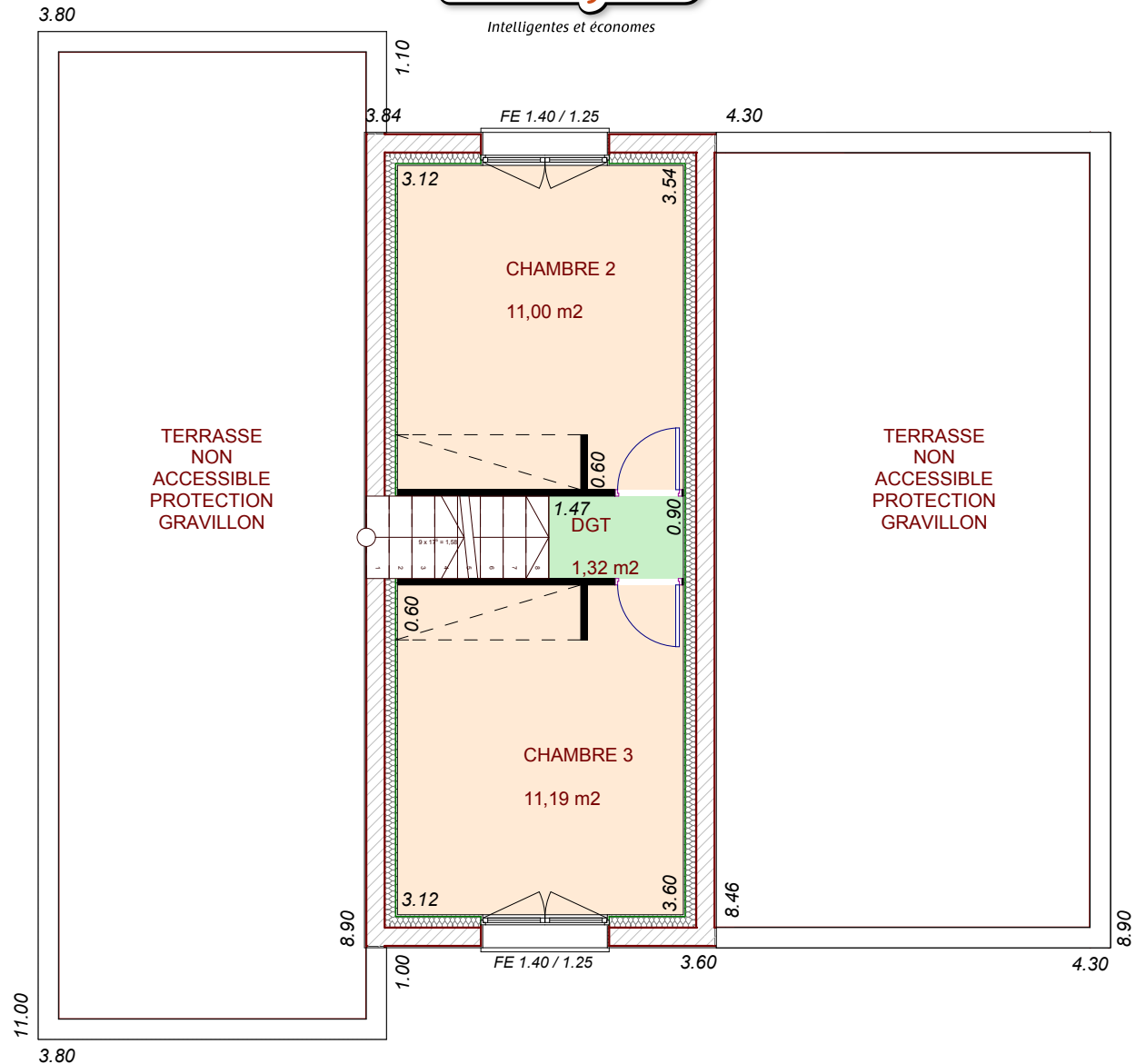
REZ DE CHAUSSEE

**106.82 M<sup>2</sup>**

Surface Vitrée = 18.34 m<sup>2</sup> soit 17.17% de la surface habitable



Intelligentes et économes



**ZARAH**

**ETAGE**

**106.82 M<sup>2</sup>**

Surface Vitrée = 18.34 m<sup>2</sup> soit 17.17% de la surface habitable